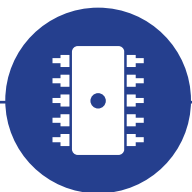


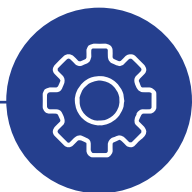
EXCELLENT PRICE / QUALITY RATIO LORAWAN™ GATEWAY

- Passive PoE 24V DC
- IP43 and IP65 versions
- Quick and easy to deploy
- -30 to +55°C



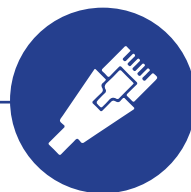
MAIN SYSTEM

CPU - ARM® Cortex-A5™ 600mhz
RAM - 128MB DDR2 200Mhz
NAND - 256MB flash with PMECC



OS / SOFTWARE

Linux Yocto 4.4
 Base configuration and factory reset
 Prebuilt with:
 - SSH Server
 - Python
 - LORIOT cloud app
 - The Things Network cloud app
 - Semtech Packet-forwarder



CONNECTIVITY

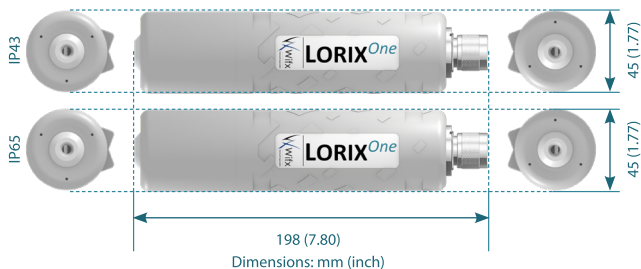
Ethernet 10/100Mbps with passive PoE 24VDC
 Permits to bring power and data with only one cable
 SD-CARD Slot to extend / replace the internal flash
 USB connector providing serial interface to manage / update the gateway



LORA / RF SYSTEM

SX1301 gateway chip SPI based
 8 channels, 49 demodulators @ 868MHz
 RX sensitivity: -140dBm (LoRa) / -110 dBm (FSK)
 TX power: 27dBm

DIMENSIONS



WORKS WITH



Indoor 200mm (7,87 inches) inclinable antenna @ 2dBi



Outdoor IP65 500mm (19,68 inches) antenna @ 4.15dBi